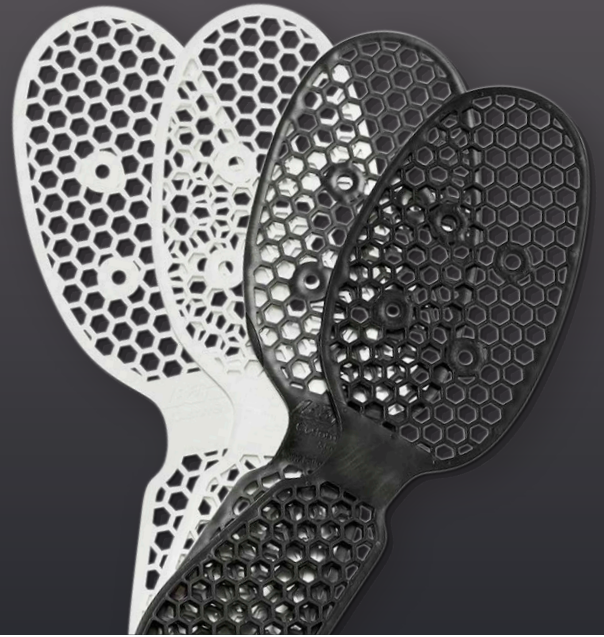




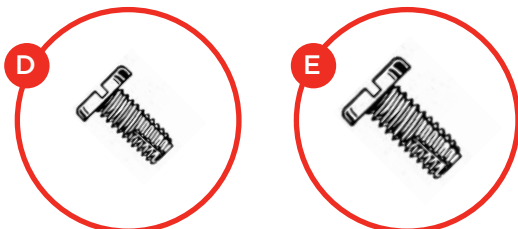
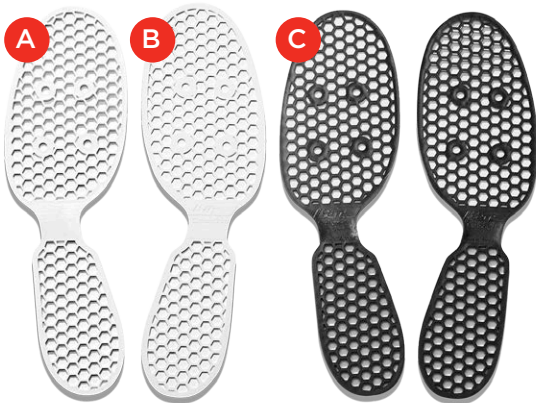
FITMENT GUIDE

BAT LOGIC CustomPack



The CustomPack contains:

- ▶ 1 x 1mm White Leg Length Shim A
- ▶ 1 x 2mm White Leg Length Shim B
- ▶ 2 x 5mm Black CustomHeel Wedges C
- ▶ 4 x 10mm Flat Head Screws D
- ▶ 4 x 12mm Flat Head Screws E



Equipment needed:

- ▶ Philips Head Screw Driver



Associated product:

QuickRelease System



SOLD SEPARATELY

STEP 1 – YOUR CUSTOM NEEDS

Have your leg length measured or heel load assessed as recommended in the BAT Logic FAQs www.batlogic.net/faqs to determine the relevant shims needed.

SHIM CHOICE GUIDE

MEASURED LEG LENGTH DISCREPANCY	1 – 4mm	CUSTOMSHIM INDICATED	1mm
	4 – 8mm		2mm
	8 – 15mm		1 + 2 = 3mm stack
	15mm +		multiple shim pack

Shim choice will be dependant on cause and effect of the discrepancy. Guides are only indicative and based on our consulting experience fitting these. If in doubt seek professional assessment.

Note: The white leg length shims can be used for either left or right sides, simply flip them over to suit.



FOR FURTHER INFORMATION
PLEASE VISIT OUR WEBSITE

WWW.BATLOGIC.NET



STEP 2 – FITMENT

FITMENT STEPS WITH THE QUICKRELEASE SYSTEM HAVE BEEN USED HOWEVER THE CUSTOMPACK CAN BE USED INDEPENDENTLY BETWEEN THE FOOTBOARD AND THE SHOE.

Clip your ShoePlate Top/s off the boat stretcher or ergo and remove the shoe/s. Place appropriate CustomShim/s or CustomHeel on top of the ShoePlate Top/s, lined up with the screw holes. The Shims/Heels should sit between the shoe and ShoePlate Top/s (Pic 2B). Select either screws D (10mm) or screws E (12mm) to suit the length needed for your number of Shims. If using just the CustomHeels or 1mm CustomShim only you may reuse the existing shoe screws.

You can use the CustomHeels and white leg length CustomShims together if needed. Thread the selected screws through the ShoePlate Top/s and CustomPack Shim/s then screw these into your rowing shoes as shown below (Pic 2A & 2B) Check the screws are tight and reattach the ShoePlate Top/s to the boat or ErgAdaptor. Refer to the QuickRelease System fitment guide for further details on clipping into the boat or erg > batlogic.net



YOUR BOAT, YOUR SETTINGS, ANYTIME, ANYWHERE. BAT LOGIC.



FOR FURTHER INFORMATION
PLEASE VISIT OUR WEBSITE

WWW.BATLOGIC.NET